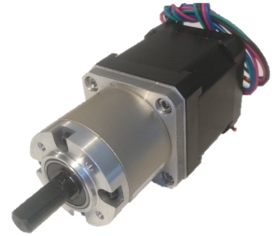




## ZDN17G51-4 NEMA 17 Bi Polar Geared Stepper Motor

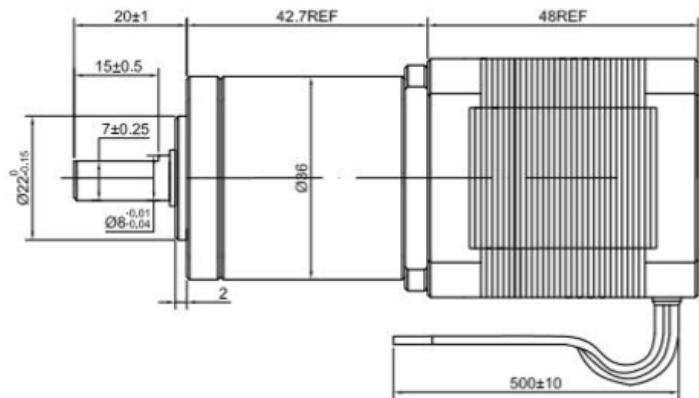
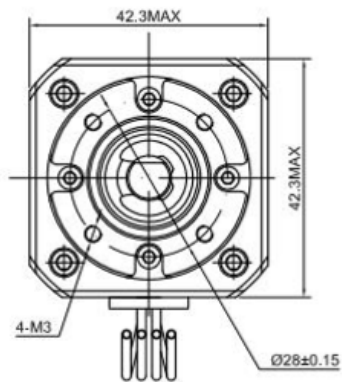


### KEY SPECIFICATIONS



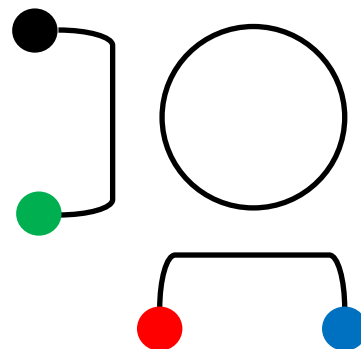
Weight (kg)	0.60	Max Permissible Torque (Nm)	4
Backlash at no load (°)	<=1	Momentary Permissible Torque (Nm)	6
Step Accuracy	+/-5.00%	Exact Gearbox Ratio	50.876:1
Step Angle without gearbox (°)	1.80		
Efficiency	73%		
Phase Inductance (mH)	2.8		
Phase Current (A)	1.68		
Phase Voltage (VDC)	2.8		
Phase Resistance (Ohms)	1.65		

### DIMENSIONS



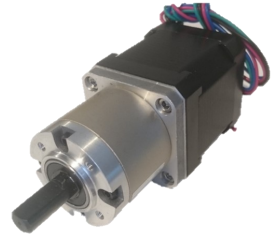
### WIRING


CONNECTION		MOTOR
Pin Number	Bipolar	Leads
1	A	<b>Black</b>
2	A\	<b>Green</b>
3	B	<b>Red</b>
4	B\	<b>Blue</b>



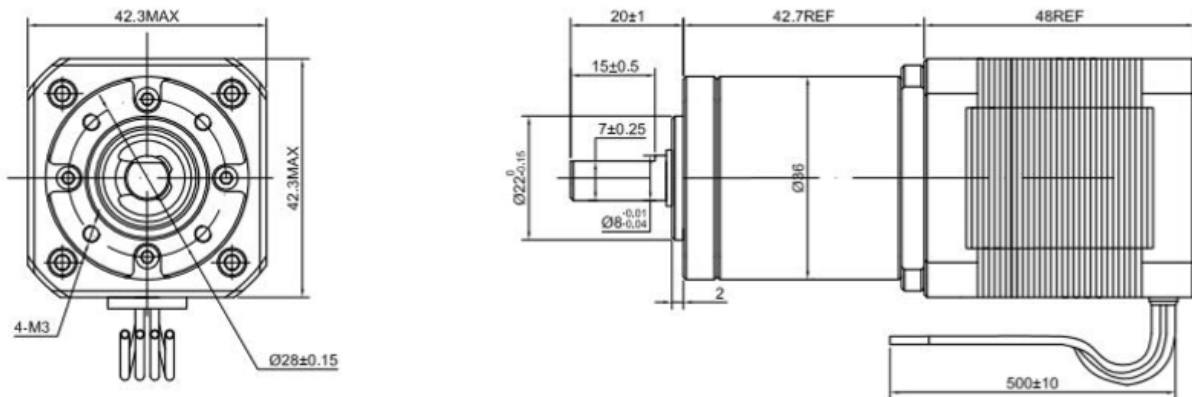


## ZDN17G51-4 NEMA 17 Bipolarer Getriebeschrittmotor



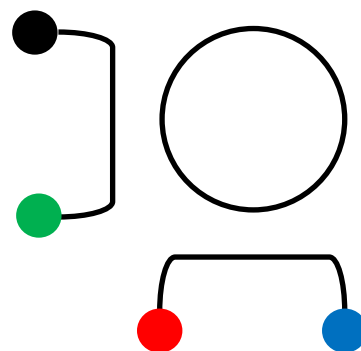
Schlüsselspezifikationen 			
Gewicht (kg)	0.60	Max. Zulässiges Drehmoment(Nm)	4
Spiel im Leerlauf(°)	<=1	Momentan zulässiges Drehmoment (Nm)	6
Schritt Genauigkeit	+/-5.00%	Genaues Getriebeverhältnis	50.876:1
Schrittwinkel ohne Getriebe(°)	1.80		
Effizienz	73%		
Phaseninduktivität (mH)	2.8		
Phasenstrom (A)	1.68		
Phasenspannung (VDC)	2.8		
Phasenwiderstand(Ohms)	1.65		

### Masse

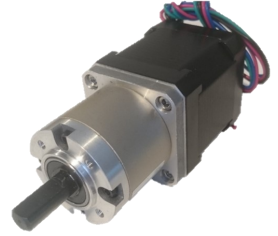


### Verdrahtung

VERBINDUNG		MOTOR
Anzahl der stifte	Bipolar	Leitung
1	A	Schwarz
2	A\	Grün
3	B	Rot
4	B\	Blau



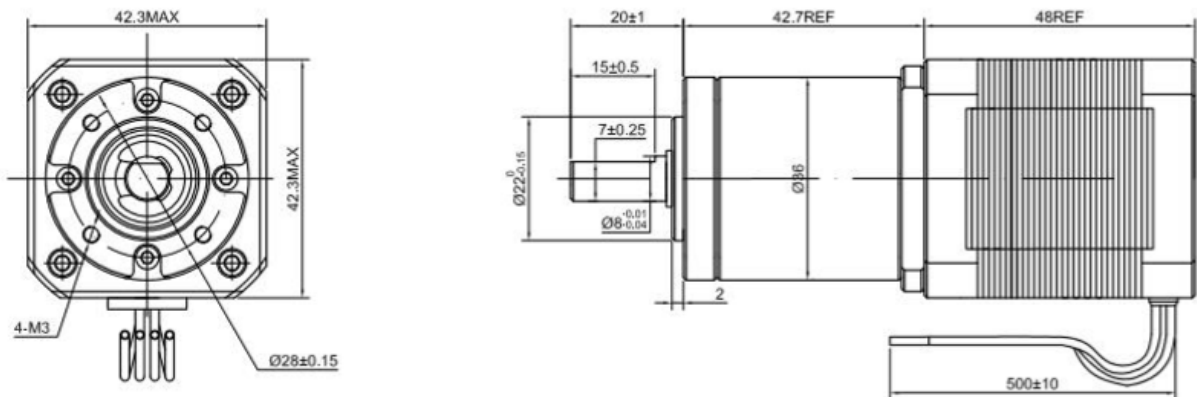
## ZDN17G51-4 NEMA 17 Moteur pas à pas à engrenages bipolaires



### SPÉCIFICATIONS CLÉS

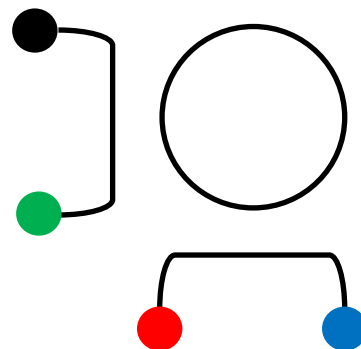
Poids (kg)	0.60	Couple maximal autorisé (Nm)	4
Secousse sans charge (°)	<=1	Momentary Couple admissible(Nm)	6
Précision de l'étape	+/-5.00%	Rapport de boîte de vitesses exact	50.876:1
Step Angle sans boîte de vitesses(°)	1.80		
Efficacité	73%		
Inductance de phase (mH)	2.8		
Phase courant(A)	1.68		
Phase Tension(VDC)	2.8		
Résistance de phase (Ohms)	1.65		

### DIMENSIONS



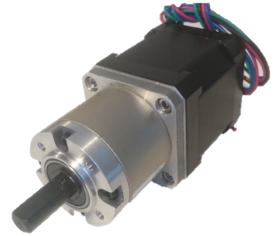
### CÂBLAGE

CONNEXION		MOTEUR
Nombre de épingle	Bipolaire	Plombures
1	A	<b>Black</b>
2	A\	<b>Green</b>
3	B	<b>Red</b>
4	B\	<b>Blue</b>





## ZDN17G51-4 NEMA 17 Motor de pasos adaptado bipolar

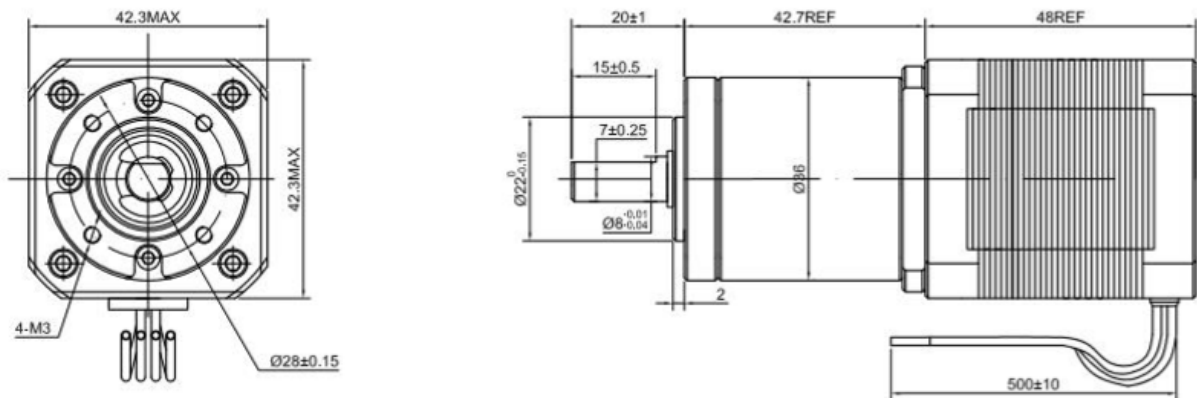


### ESPECIFICACIONES



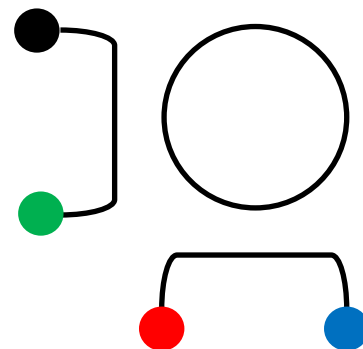
Peso (kg)	0.60	Par permitido máximo (Nm)	4
Contragolpe sin carga (°)	$\leq 1$	Par momentáneo permisible(Nm)	6
Exactitud del paso	$\pm 5.00\%$	Proporción exacta de caja de engrana-	50.876:1
Ángulo de paso sin caja de cambios	1.80		
Eficiencia	73%		
Inductancia de fase (mH)	2.8		
Fase corriente (A)	1.65		
Voltaje de fase (VDC)	2.8		
Resistencia de fase (Ohms)	1.68		

### DIMENSIONES



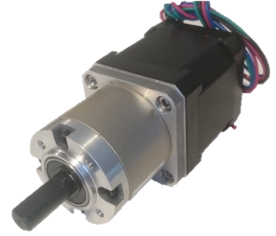
### ALAMBRADO

CONEXIÓN		MOTOR
Número de pines	Bipolar	Cable
1	A	<b>Negro</b>
2	A\	<b>Verde</b>
3	B	<b>Rojo</b>
4	B\	<b>Azul</b>





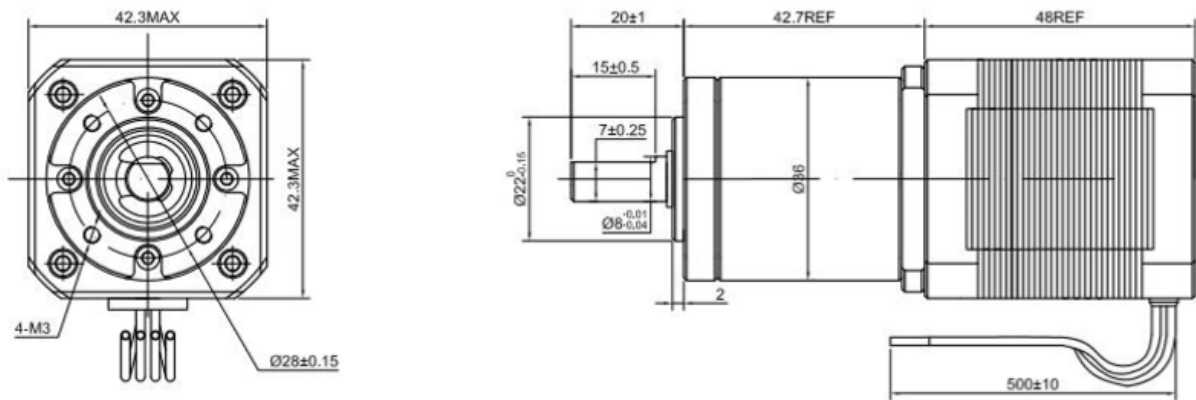
## ZDN17G51-4 NEMA 17 Motore passo-passo motorizzato Bi-Polar



### SPECIFICHE CHIAVE

Peso (kg)	0.60	Coppia massima consentita (Nm)	4
Backlash a vuoto (°)	<=1	Coppia momentanea ammissibile(Nm)	6
Accuratezza del passo	+/-5.00%	Rapporto di trasmissione esatto	50.876:1
Step Angle senza riduttore (°)	1.80		
Efficienza	73%		
Induttanza di fase (mH)	2.8		
Corrente di fase (A)	1.68		
Tensione di fase (VDC)	2.8		
Resistenza di fase (Ohms)	1.65		

### DIMENSIONI



### CABLAGGIO

CONNESSIONE		IL MOTORE
Numero di perno	Bipolare	Filo
1	A	<b>Nero</b>
2	A\	<b>Verde</b>
3	B	<b>Rojo</b>
4	B\	<b>Blu</b>

