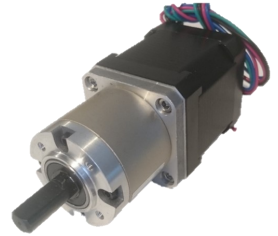




ZDN17G27-3 NEMA 17 Bi Polar Geared Stepper Motor

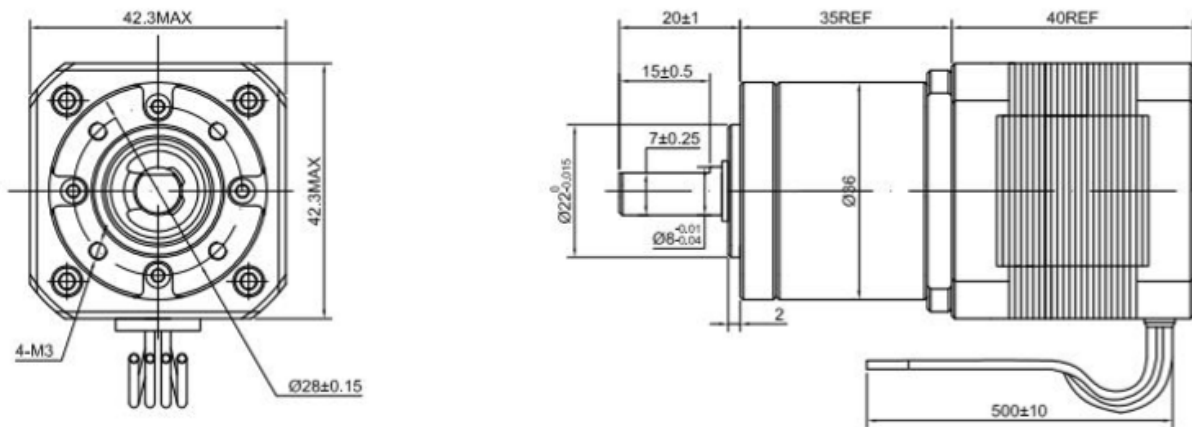


KEY SPECIFICATIONS



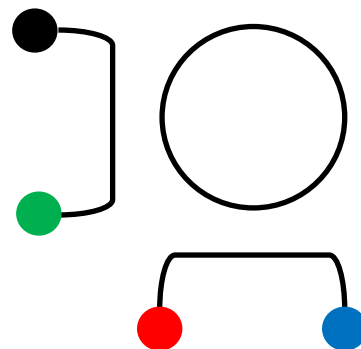
Weight (kg)	0.55	Max Permissible Torque (Nm)	3
Backlash at no load (°)	<=1	Momentary Permissible Torque (Nm)	5
Step Accuracy	+/-5.00%	Exact Gearbox Ratio	1:26.85
Step Angle without gearbox (°)	1.80		
Efficiency	81%		
Phase Inductance (mH)	3.2		
Phase Current (A)	1.65		
Phase Voltage (VDC)	2.8		
Phase Resistance (Ohms)	1.65		

DIMENSIONS



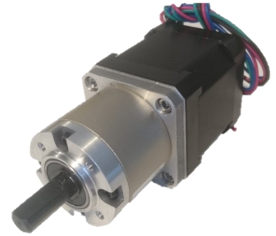
WIRING

CONNECTION		MOTOR
Pin Number	Bipolar	Leads
1	A	Black
2	A\	Green
3	B	Red
4	B\	Blue



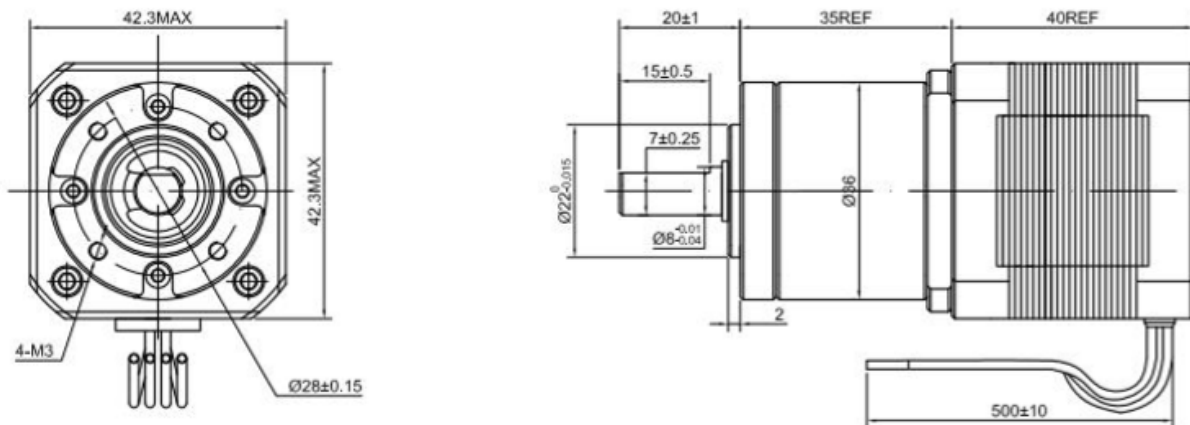


ZDN17G27-3 NEMA 17 Bipolarer Getriebeschrittmotor



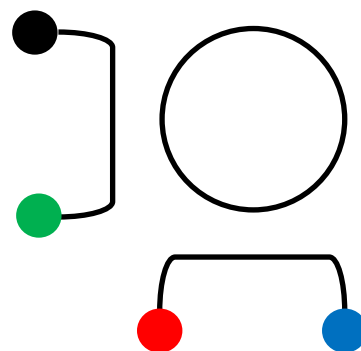
Schlüsselspezifikationen			
Gewicht (kg)	0.55	Max. Zulässiges Drehmoment(Nm)	3
Spiel im Leerlauf(°)	<=1	Momentan zulässiges Drehmoment (Nm)	5
Schritt Genauigkeit	+/-5.00%	Genaueres Getriebeverhältnis	1:26.85
Schrittinkel ohne Getriebe(°)	1.80		
Effizienz	81%		
Phaseninduktivität (mH)	3.2		
Phasenstrom (A)	1.65		
Phasenspannung (VDC)	2.8		
Phasenwiderstand(Ohms)	1.65		

Masse

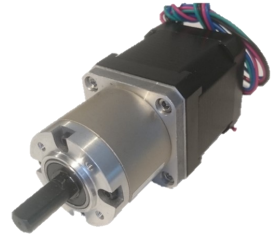


Verdrahtung

VERBINDUNG		MOTOR
Anzahl der stifte	Bipolar	Leitung
1	A	Schwarz
2	A\	Grün
3	B	Rot
4	B\	Blau



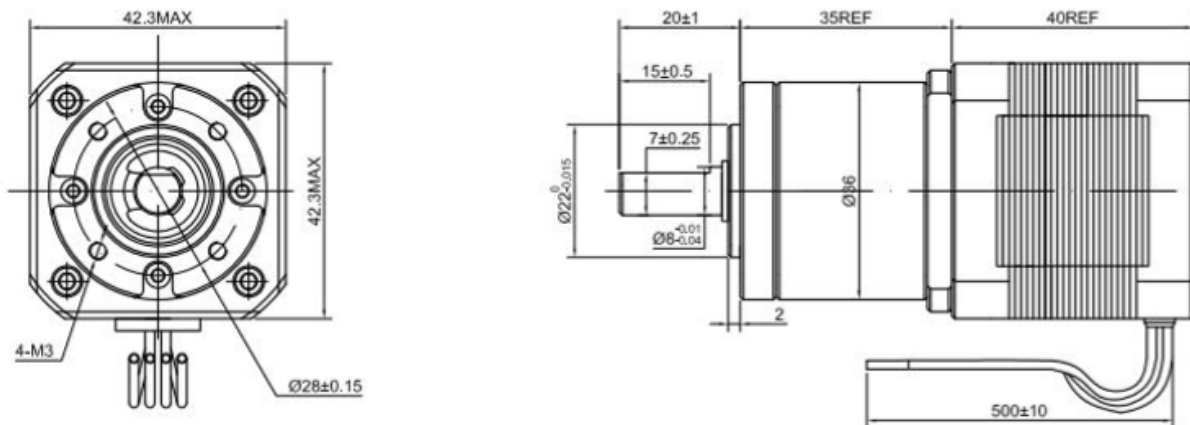
ZDN17G27-3 NEMA 17 Moteur pas à pas à engrenages bipolaires



SPÉCIFICATIONS CLÉS

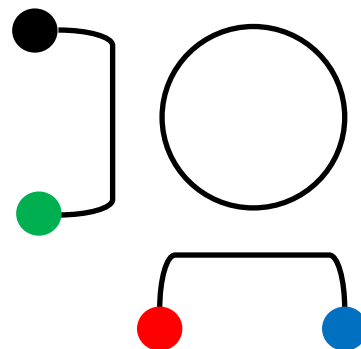
Poids (kg)	0.55	Couple maximal autorisé (Nm)	3
Secousse sans charge (°)	<=1	Momentary Couple admissible(Nm)	5
Précision de l'étape	+/-5.00%	Rapport de boîte de vitesses exact	1:26.85
Step Angle sans boîte de vitesses(°)	1.80		
Efficacité	81%		
Inductance de phase (mH)	3.2		
Phase courant(A)	1.65		
Phase Tension(VDC)	2.8		
Résistance de phase (Ohms)	1.65		

DIMENSIONS



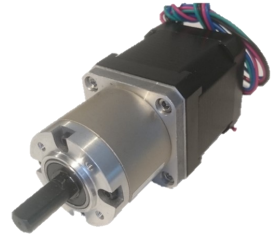
CÂBLAGE

CONNEXION		MOTEUR
Nombre de épingle	Bipolaire	Plombures
1	A	Black
2	A\	Green
3	B	Red
4	B\	Blue





ZDN17G27-3 NEMA 17 Motor de pasos adaptado bipolar

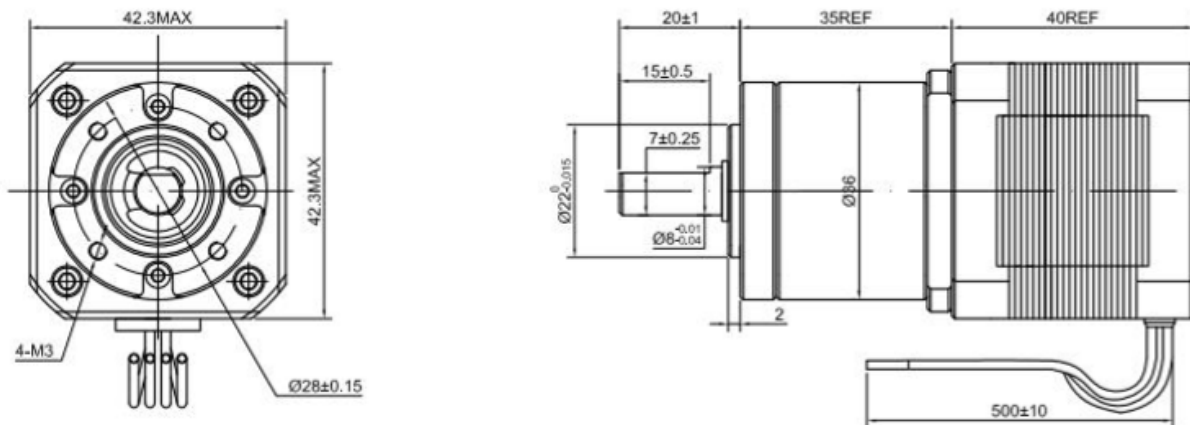


ESPECIFICACIONES



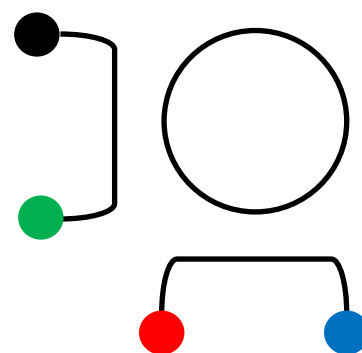
Peso (kg)	0.55	Par permitido máximo (Nm)	3
Contragolpe sin carga (°)	≤ 1	Par momentáneo permisible(Nm)	5
Exactitud del paso	$\pm 5.00\%$	Proporción exacta de caja de engrana-	1:26.85
Ángulo de paso sin caja de cambios (°)	1.80		
Eficiencia	81%		
Inductancia de fase (mH)	3.2		
Fase corriente (A)	1.65		
Voltaje de fase (VDC)	2.8		
Resistencia de fase (Ohms)	1.65		

DIMENSIONES



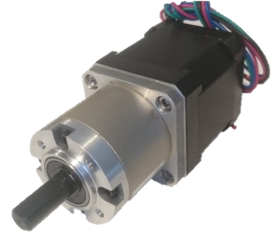
ALAMBRADO

CONEXIÓN		MOTOR
Número de pines	Bipolar	Cable
1	A	Negro
2	A\	Verde
3	B	Rojo
4	B\	Azul





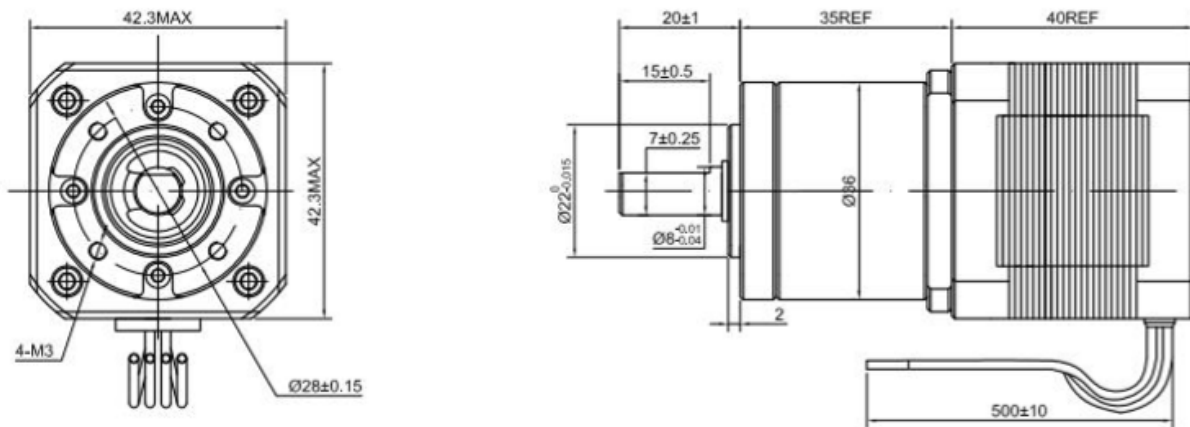
ZDN17G27-3 NEMA 17 Motore passo-passo motorizzato Bi-Polar



SPECIFICHE CHIAVE

Peso (kg)	0.55	Coppia massima consentita (Nm)	3
Backlash a vuoto (°)	<=1	Coppia momentanea ammissibile(Nm)	5
Accuratezza del passo	+/-5.00%	Rapporto di trasmissione esatto	1:26.85
Step Angle senza riduttore (°)	1.80		
Efficienza	81%		
Induttanza di fase (mH)	3.2		
Corrente di fase (A)	1.65		
Tensione di fase (VDC)	2.8		
Resistenza di fase (Ohms)	1.65		

DIMENSIONI



CABLAGGIO

CONNESSIONE		IL MOTORE
Numero di perno	Bipolare	Filo
1	A	Nero
2	A\	Verde
3	B	Rojo
4	B\	Blu

