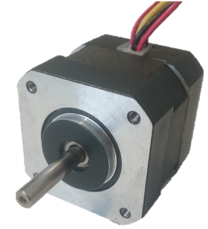




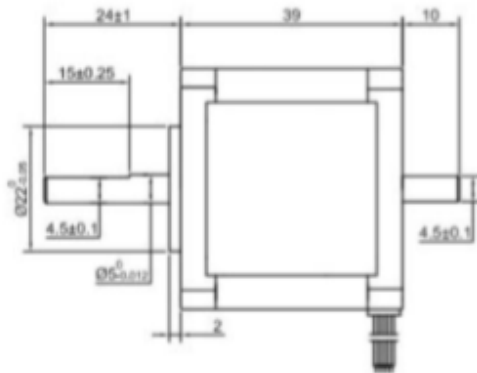
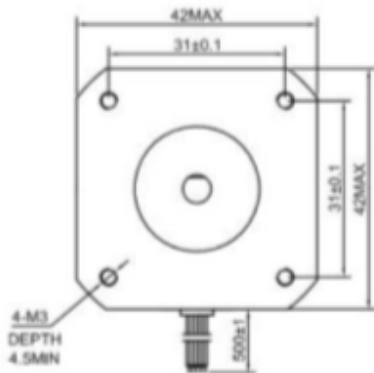
## ZDN17026 NEMA 17 Bi Polar Stepper Motor



### KEY SPECIFICATIONS

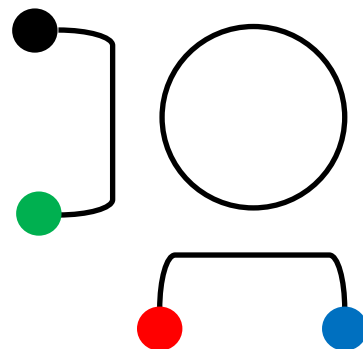
Weight (kg)	0.28
Rotor Inertia (g/cm <sup>2</sup> )	54.00
Step Accuracy	+/-5.00%
Step Angle (°)	0.90
Holding Torque (Nm)	0.26
Phase Inductance (mH)	30.00
Phase Current (A)	0.40
Phase Voltage (VDC)	12.00
Phase Resistance (Ohms)	30.00

### DIMENSIONS



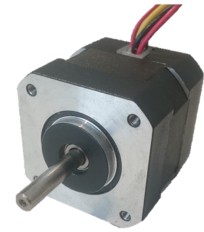
### WIRING

CONNECTION		MOTOR
Pin Number	Bipolar	Leads
1	A	<b>Black</b>
2	A\	<b>Green</b>
3	B	<b>Red</b>
4	B\	<b>Blue</b>





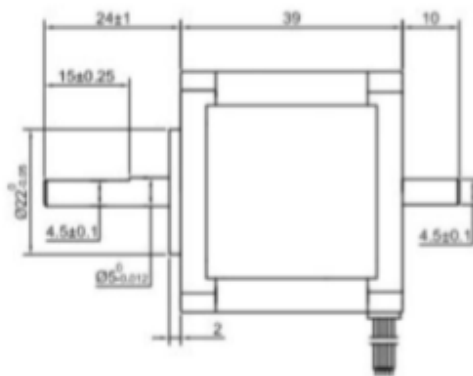
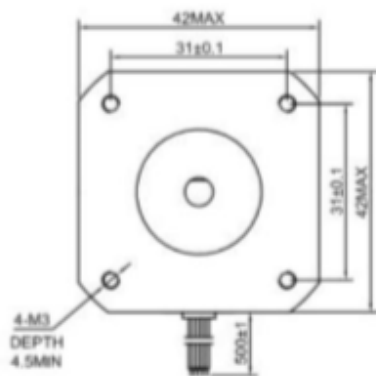
## ZDN17026 NEMA 17 Bipolarer Schrittmotor



### Schlüsselspezifikationen

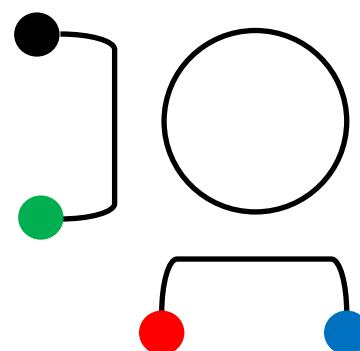
Gewicht(kg)	0.28
Rotorträgheit (g/cm <sup>2</sup> )	54.00
Schritt Genauigkeit	+/-5.00%
Schrittwinkel (°)	0.90
Haltedrehmoment (Nm)	0.26
Phaseninduktivität (mH)	30.00
Phasenstrom (A)	0.40
Phasenspannung (VDC)	12.00
Phasenwiderstand (Ohms)	30.00

### Masse



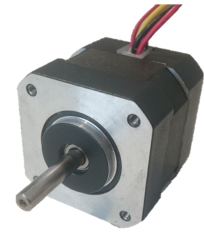
### Verdrahtung

VERBINDUNG		MOTOR
Stift Nummer	Bipolar	Leitung
1	A	Schwarz
2	A\	Grün
3	B	Rot
4	B\	Blau





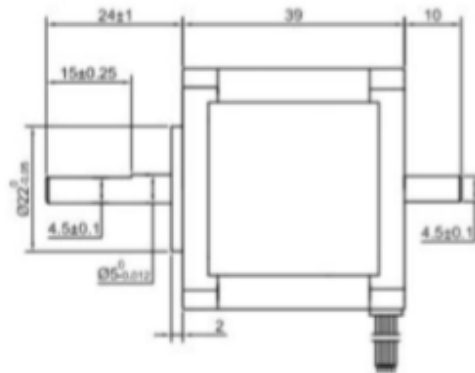
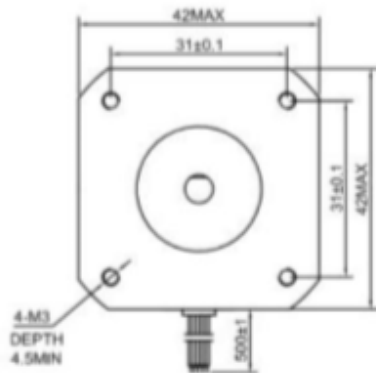
## ZDN17026 NEMA 17 Moteur pas à pas bipolaire



### SPÉCIFICATIONS CLÉS

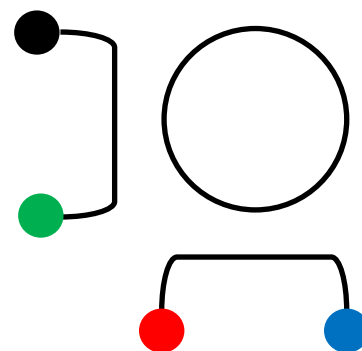
Poids(kg)	0.28
Inertie du rotor (g/cm <sup>2</sup> )	54.00
Précision de l'étape	+/-5.00%
Angle d'étape (°)	0.90
Couple de serrage (Nm)	0.26
Inductance de phase (mH)	30.00
Phase actuelle (A)	0.40
Phase Tension (VDC)	12.00
Résistance de phase (Ohms)	30.00

### DIMENSIONS



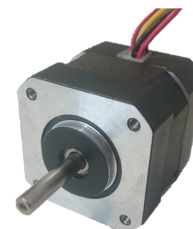
### CÂBLAGE

CONNEXION		MOTEUR
Numéro de épingle	Bipolaire	Plombures
1	A	Noir
2	A\	Vert
3	B	Rouge
4	B\	Bleu





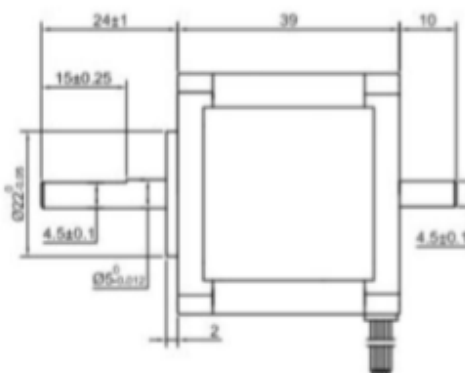
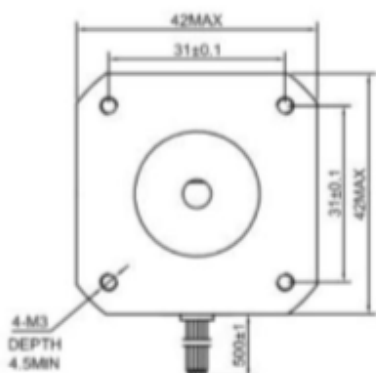
## ZDN17026 NEMA 17 Motor paso a paso bipolar



### ESPECIFICACIONES CLAVE

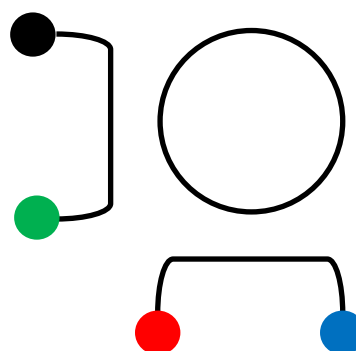
Peso (kg)	0.28
Inercia del rotor (g/cm <sup>2</sup> )	54.00
Exactitud del paso	+/-5.00%
Ángulo de paso (°)	0.90
Par de mantenimiento (Nm)	0.26
Inductancia de fase (mH)	30.00
Fase de corriente (A)	0.40
Voltaje de fase (VDC)	12.00
Resistencia de fase (Ohms)	30.00

### DIMENSIONES

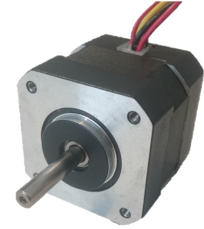


### ALAMBRADO

CONEXIÓN		MOTOR
número de alfiler	Bipolar	Conductores
1	A	<b>Negro</b>
2	A\	<b>Verde</b>
3	B	<b>Rojo</b>
4	B\	<b>Azul</b>



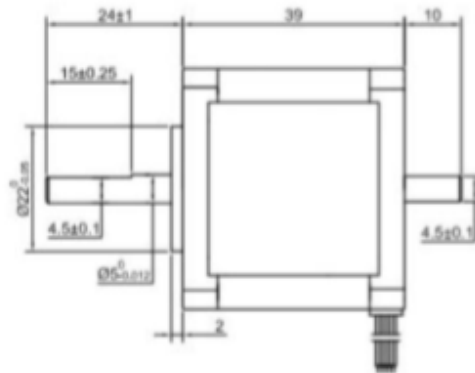
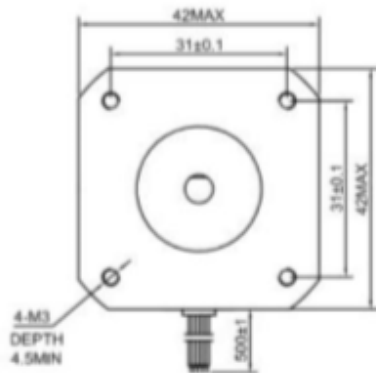
## ZDN17026 NEMA 17 Motore passo-passo bipolare



### SPECIFICHE CHIAVE

Peso (kg)	0.28
Rotore Inertia (g/cm <sup>2</sup> )	54.00
Accuratezza del passo	+/-5.00%
Angolo di passo (°)	0.90
Tenendo la coppia (Nm)	0.26
Induttanza di fase (mH)	30.00
Corrente di fase (A)	0.40
Tensione di fase (VDC)	12.00
Resistenza di fase (Ohms)	30.00

### DIMENSIONI



### CABLAGGIO

CONNESSIONE		IL MOTORE
Numero di per-	Bipolare	Conduce
1	A	<b>Nero</b>
2	A\	<b>Verde</b>
3	B	<b>Rosso</b>
4	B\	<b>Blu</b>

