









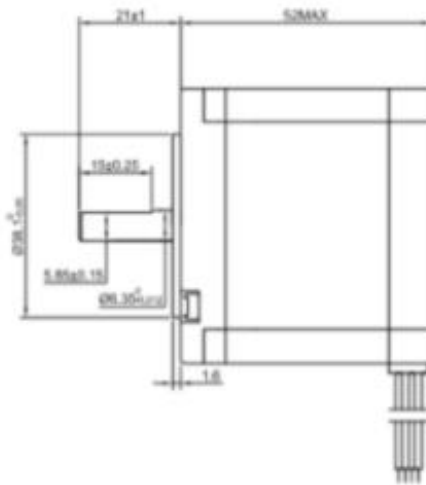
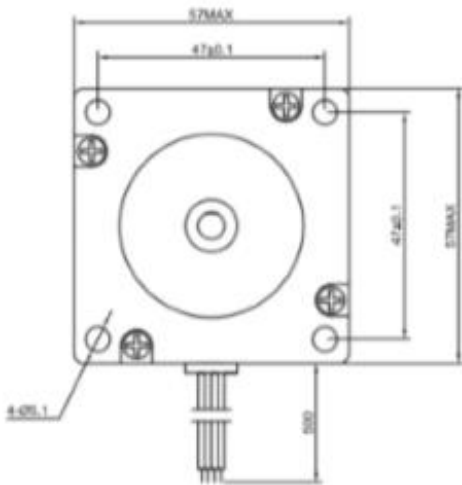
## ZDN2309 NEMA 23 Motor paso a paso bipolar



### ESPECIFICACIONES CLAVE

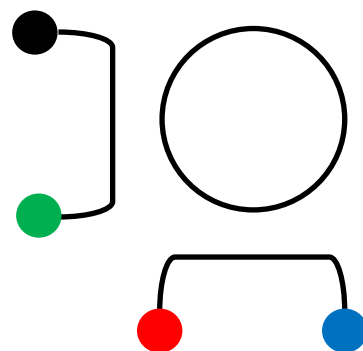
Peso (kg)	0.65
Inercia del rotor (g/cm <sup>2</sup> )	280.00
Exactitud del paso	+/-5.00%
Ángulo de paso (°)	1.80
Par de mantenimiento (Nm)	0.90
Inductancia de fase (mH)	5.00
Fase de corriente (A)	2.00
Voltaje de fase (VDC)	3.60
Resistencia de fase (Ohms)	1.80

### DIMENSIONES

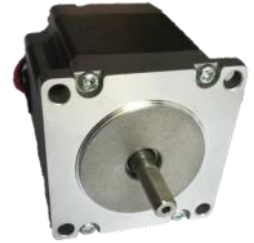


### ALAMBRADO

CONEXIÓN		MOTOR
número de alfiler	Bipolar	Conductores
1	A	<b>Negro</b>
2	A\	<b>Verde</b>
3	B	<b>Rojo</b>
4	B\	<b>Azul</b>



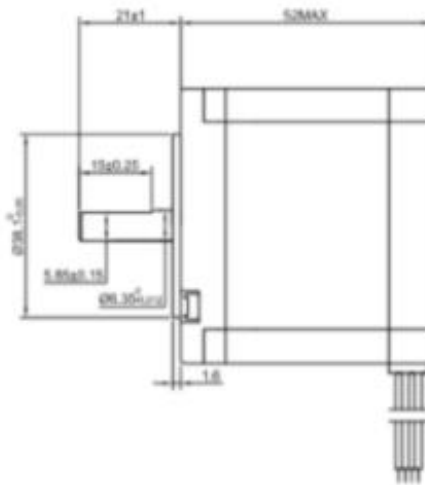
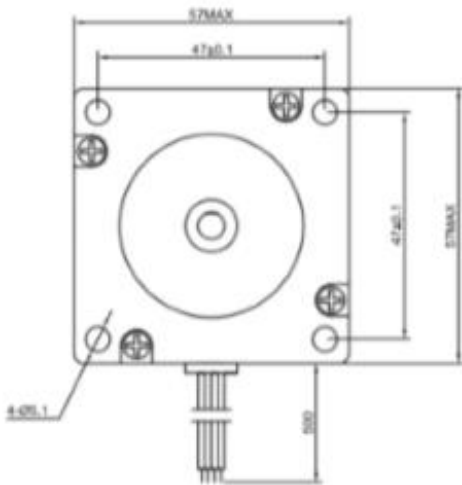
## ZDN2309 NEMA 23 Motore passo-passo bipolare



### SPECIFICHE CHIAVE

Peso (kg)	0.65
Rotore Inertia (g/cm <sup>2</sup> )	280.00
Accuratezza del passo	+/-5.00%
Angolo di passo (°)	1.80
Tenendo la coppia (Nm)	0.90
Induttanza di fase (mH)	5.00
Corrente di fase (A)	2.00
Tensione di fase (VDC)	3.60
Resistenza di fase (Ohms)	1.80

### DIMENSIONI



### CABLAGGIO

CONNESSIONE		IL MOTORE
Numero di per- no	Bipolare	Conduce
1	A	<b>Nero</b>
2	A\	<b>Verde</b>
3	B	<b>Rosso</b>
4	B\	<b>Blu</b>

