



ZIKODRIVE 2 Brushless DC Motor controller - Technical Datasheet (REV-A)



Product Definition: A high quality, easy to use Brushless DC motor controller designed and manufactured in United Kingdom.

Key Features:

- Efficient
- UART Connectivity
- Dedicated Software
- Programmable Output Pin
- Analogue speed and direction control
- 4 Quadrant Bipolar Operation
- Self-Optimisation
- Easy to operate
- Clean and compact design

Technical Specifications:

| Specification | Value |
|----------------------------------|--|
| Maximum Power | 1400 W |
| Rated Power | 700 W |
| Drive Method | High Frequency Sensor less Trapezoidal |
| Minimum Voltage | 8 V |
| Analogue Input | 0-3.3 V |
| Operating Temperature | -20 to 85 Celsius |
| Weight (Without Casing) | 95 g |
| Weight (With Casing) | 300 g |
| Maximum Voltage | 54 V |
| Running Current | 15 A |
| Maximum Current | 30 A |
| UL Rating | ULV94 |
| ROHS Compliant | Yes |
| REACH Compliant | No |
| Country of Origin | UK |
| Overtemperature Protection | Yes |
| Header Pin Pitch | 2.54 mm |
| 2-way and 3-way Connectors Pitch | 7.62 mm |

**** NOTE:** Under certain operating conditions (for example high current, low speed at a relatively high ambient temperature and 100% duty cycle), the controller will get hot. Care must be taken to ensure the unit is adequately heatsinked and cooled in such circumstances. If you have a specific requirement or application where this may be relevant, then please contact our team to discuss suitability and we will be happy to advise.

Connections:

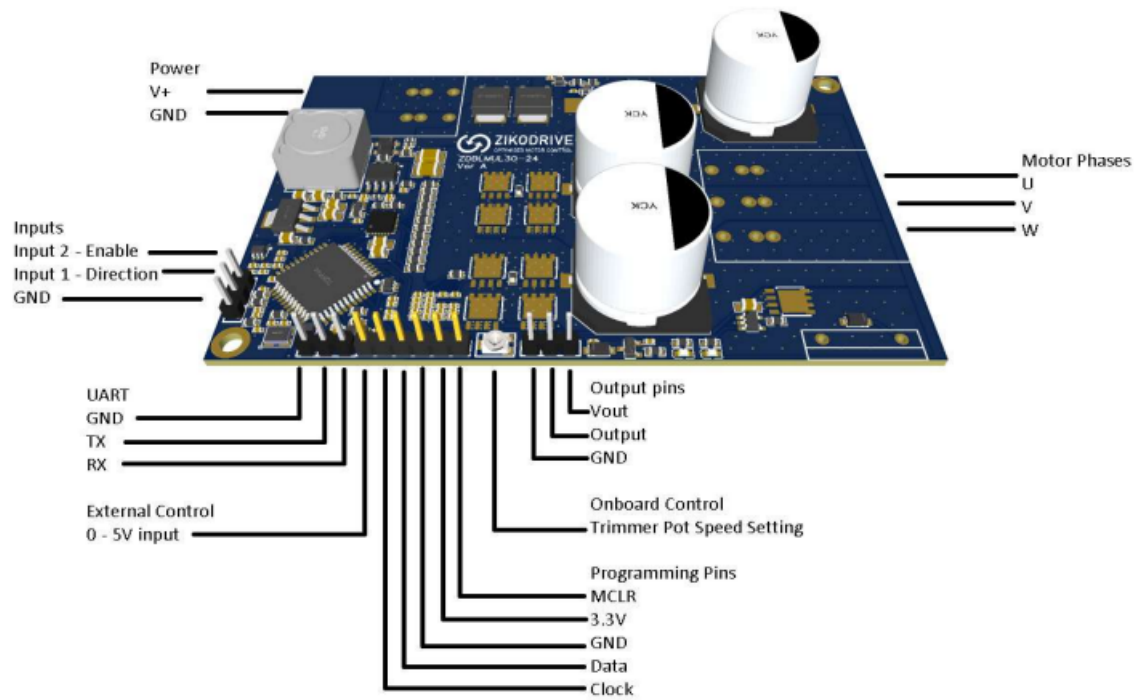


Figure 1: ZIKODRIVE 2 Terminal Connections

Dimensions:

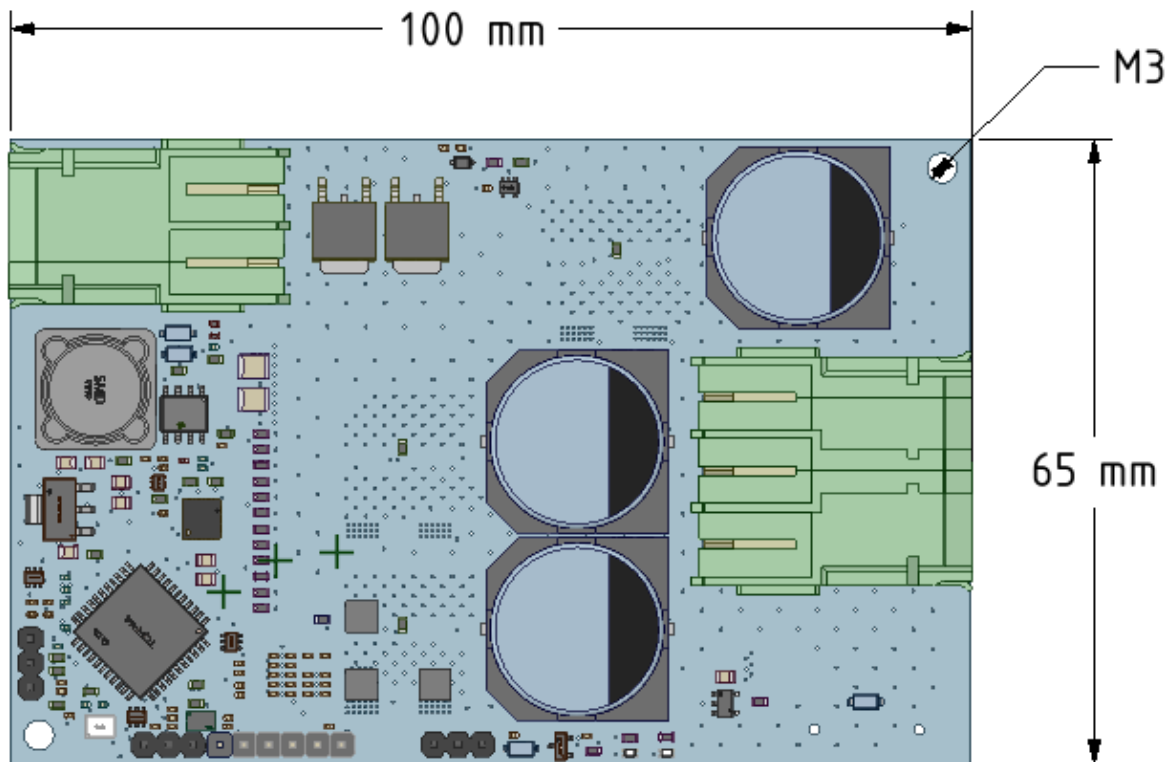


Figure 2: ZIKODRIVE 2 Top View (Without Casing)

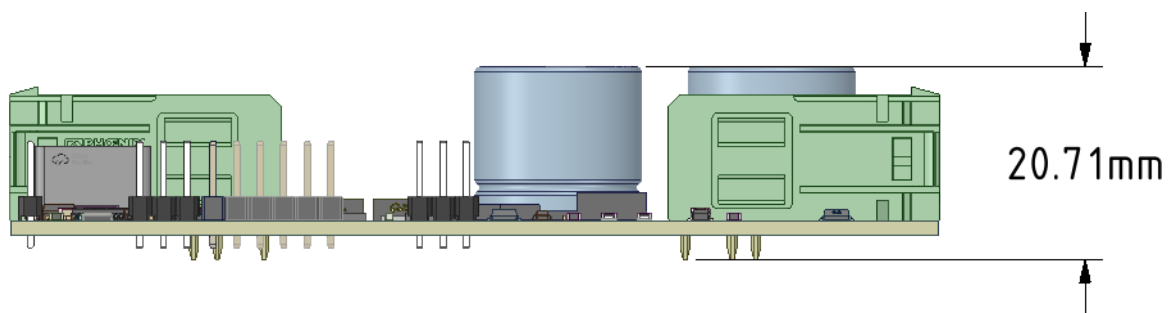


Figure 3: ZIKODRIVE 2 Side View (Without Casing)

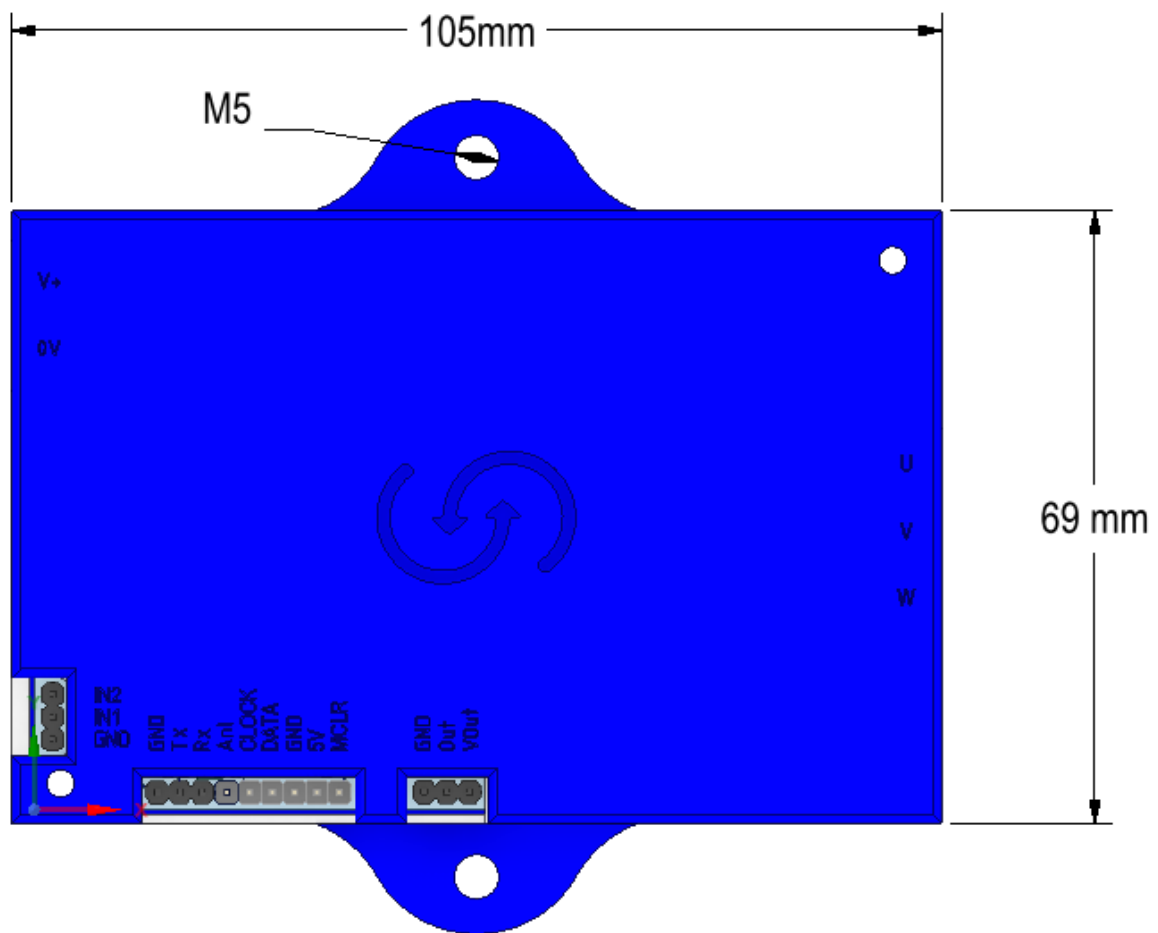


Figure 4: ZIKODRIVE 2 Top View (With Casing)

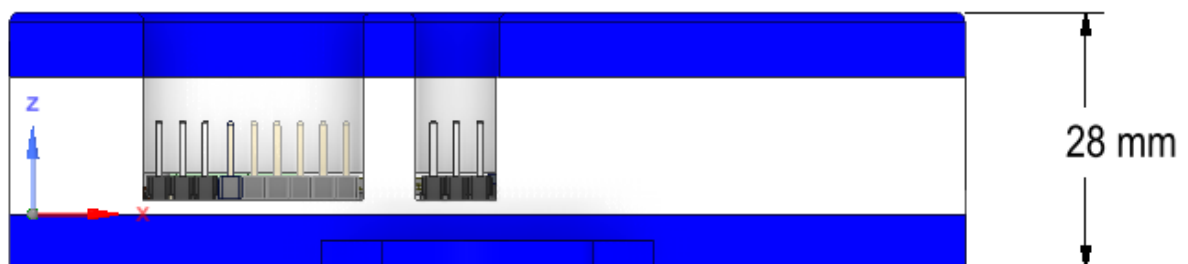


Figure 5: ZIKODRIVE 2 Side View (With Casing)